



Working Collaboratively with Tidal Energy Developers

Turning the Tide
Friday, 15th May 2015
National
Oceanography Centre,
Southampton



John Gallimore
Business Development/Commercial
Manager
Yarmouth Harbour
John.Gallimore@Yarmouth-harbour.co.uk

YARMOUTH HARBOUR

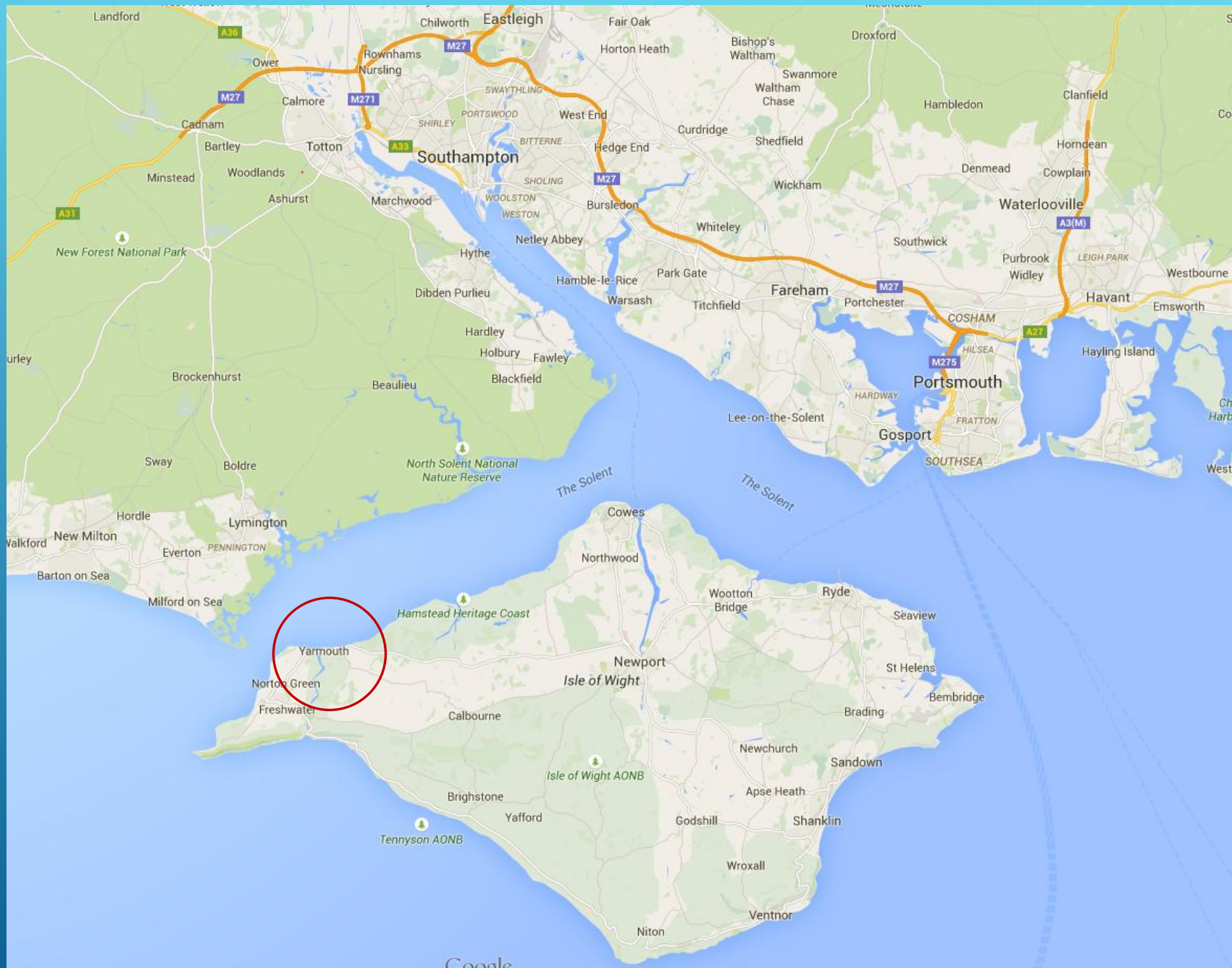
Working Collaboratively
with Tidal Energy
Developers

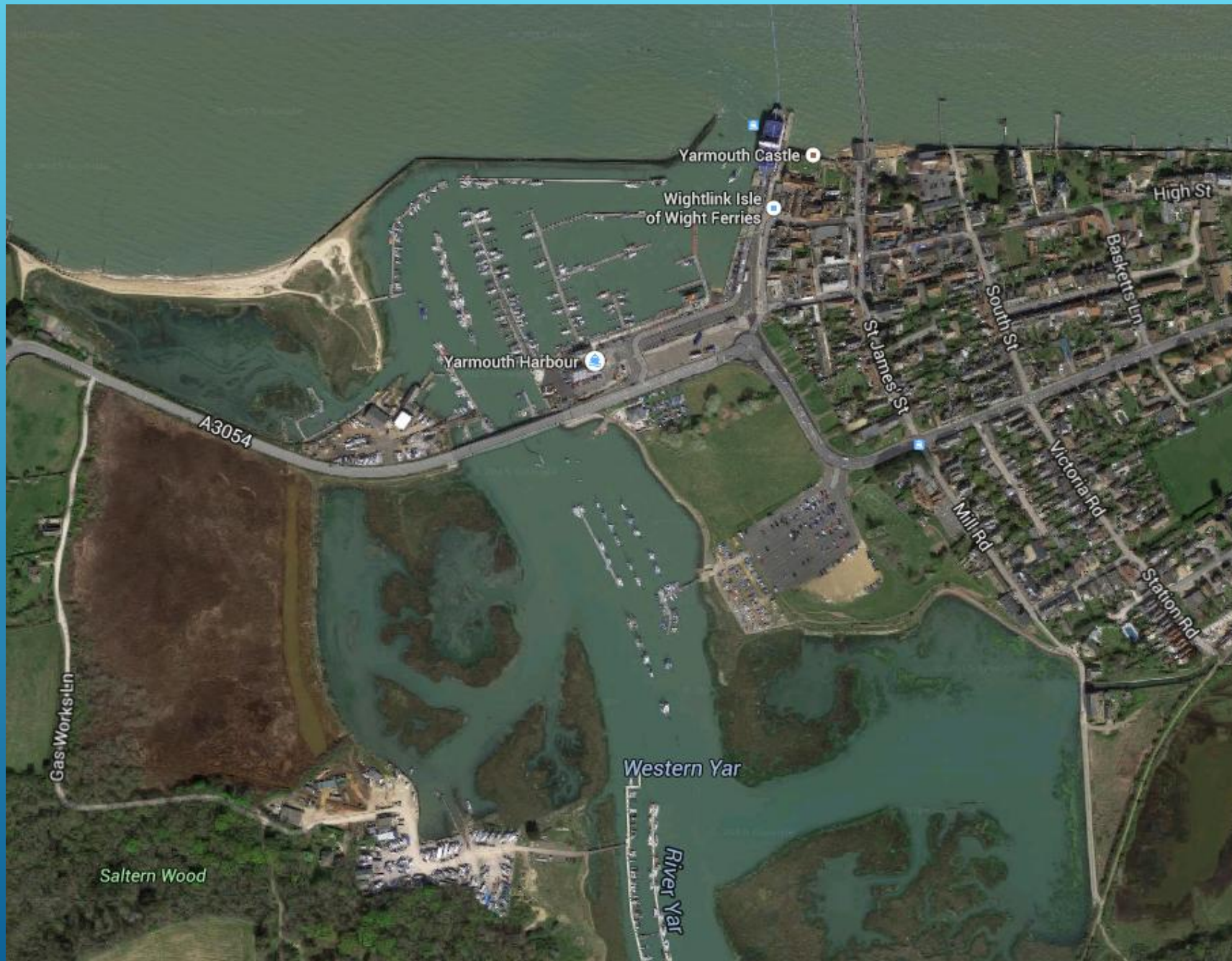
Turning the Tide
Friday, 15th May 2015
National
Oceanography Centre,
Southampton



EUROPEAN UNION
Investing in Your Future
European Regional
Development Fund 2007-13







Yarmouth Today

- ▶ £2.5 million income
- ▶ 250 Berths
- ▶ Small Commercial fleet (10%)
- ▶ 32,000 visiting boats
- ▶ Wightlink Ferry Services
- ▶ Gateway to West Wight





Eco Energy Hub

Eco Energy Hub Concept

Vision

Promote Yarmouth as the Solent's Offshore Renewable Energy Hub.

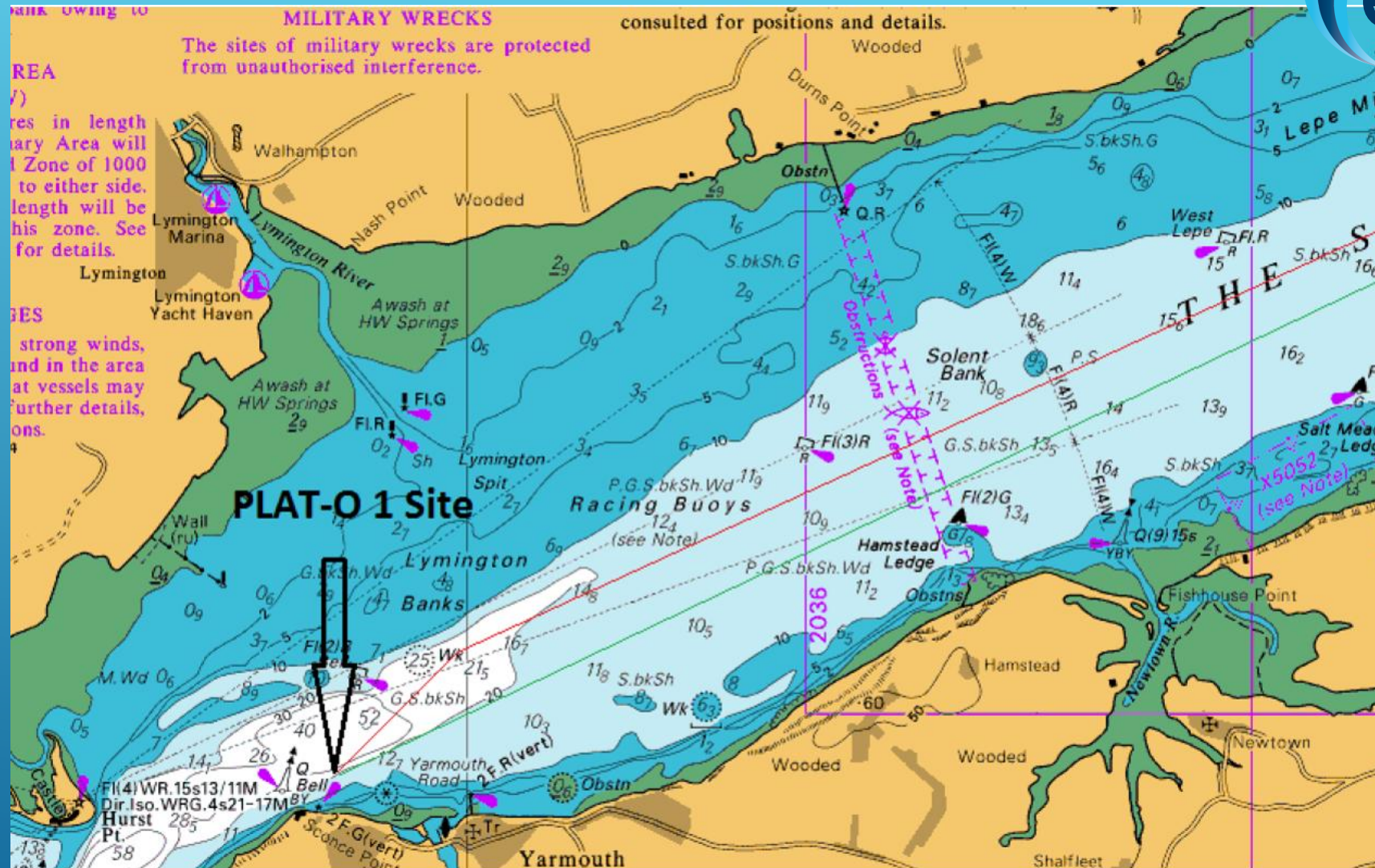
- ▶ Facilitate growth in offshore renewables and Yarmouth Harbour
- ▶ Generate new income streams
- ▶ Create employment opportunities for Yarmouth Harbour and the Isle of Wight

Yarmouth Today

- ▶ Sustainable Marine Tidal Turbine Trials
- ▶ Trident Aqua Sail Turbine Trial (2015)
- ▶ Trident Energy Wave Turbine (2015)



SME's PLAT - 0 Test Site

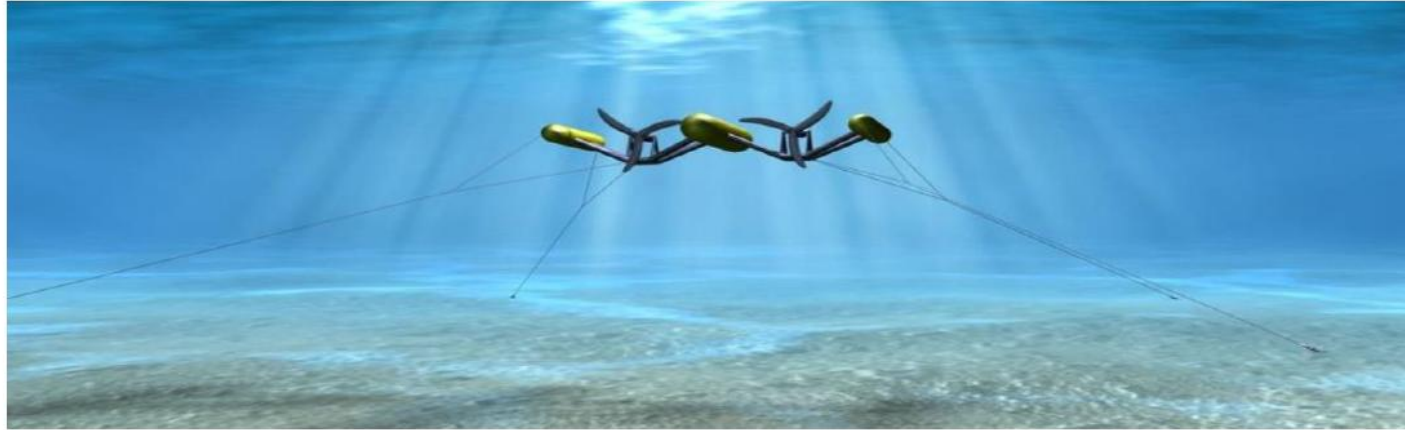


©Crown Copyright and/or database rights. Reproduced by permission of the Controller of Her Majesty's Stationery Office and the UK Hydrographic Office (www.ukho.gov.uk)

Installation Phase 3 this week

Extract from
Notice to
Mariners

Mariners are advised that on 7th May 2015 Sustainable Marine are due to commence Phase 3 of the PLAT-O installation. The operations are planned to take place over a period of 21 days.



The turbines will be operational and power will be generated during this phase. The PLAT-O pile anchor positions are:

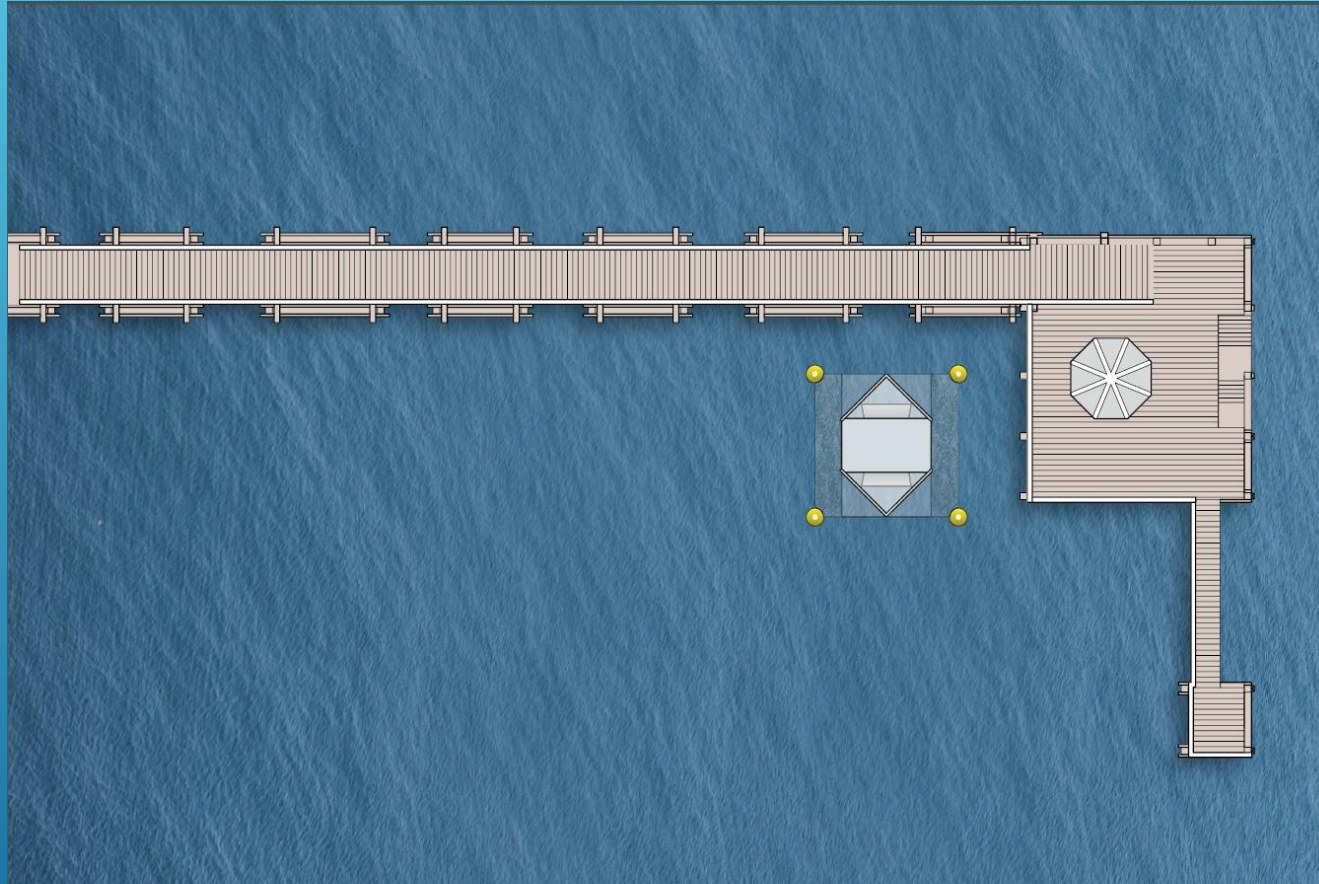
SE1	50°42.5893'N	001°31.0303'W
NE2	50°42.6041'N	001°31.0307'W
SW3	50°42.5832'N	001°31.0700'W
NW4	50°42.5987'N	001°31.0775'W

Installation Phase 3 this week



SME PLAT-O Deployment
Photo courtesy of SME

Trident AquaSail Test Site



Plan View 1. Scale View (1:250 @A4) of Proposed Trident AquaSail Installation at Yarmouth Pier Showing Footprint of Base and Special Navigation Marks

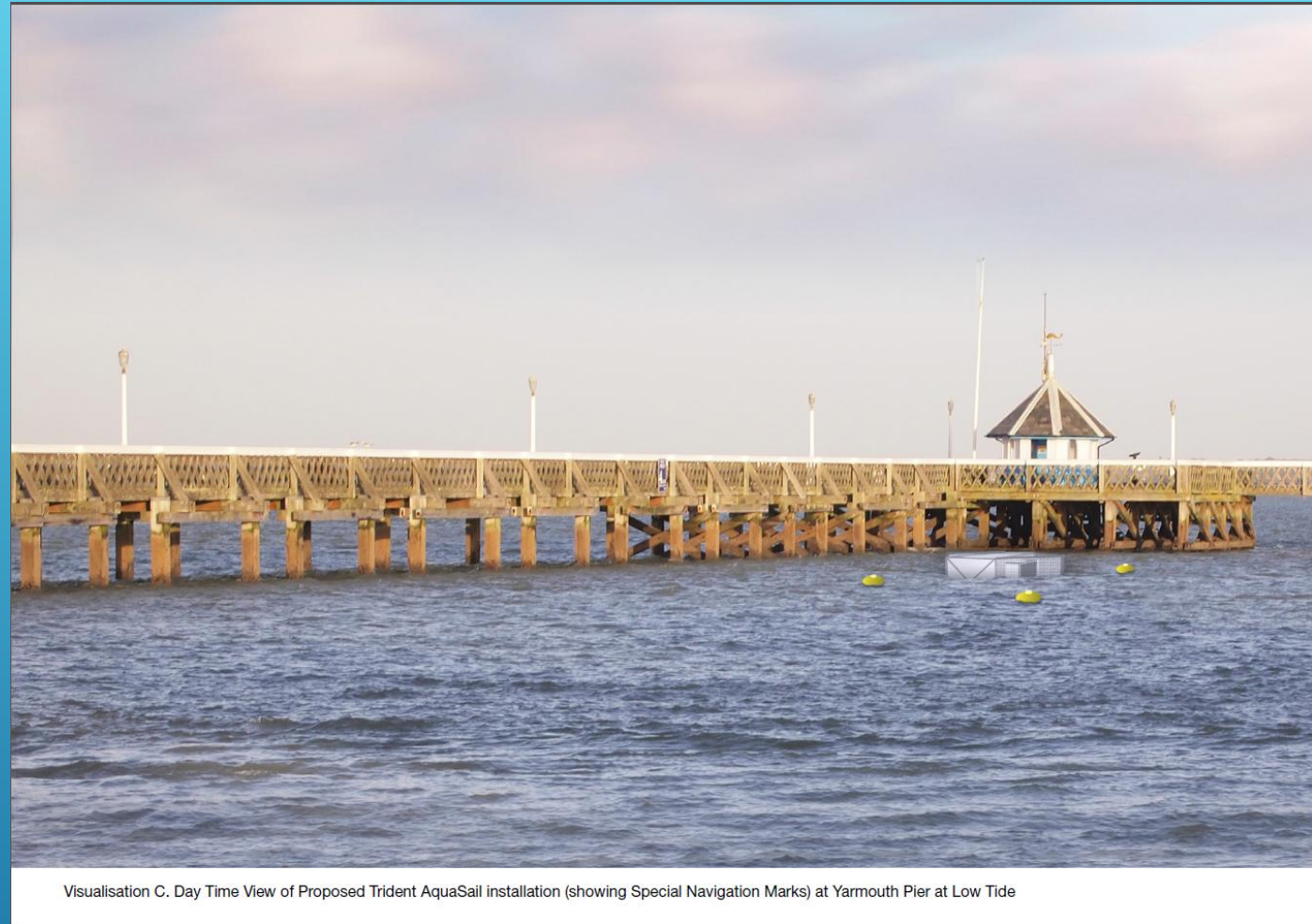


Yarmouth Pier



Trident AquaSail System

- ▶ Marine License Issued
- ▶ Hydro-Turbine System Trials
- ▶ 'Open-Water' Proof of Concept and Functionality Trials
- ▶ 8m x 8m area of sea-bed with 4 x 1 tonne anchors
- ▶ Longitudinal 2m Diameter Turbine
- ▶ 12kW Generator
- ▶ Trials to monitor and record data (not Grid connected)

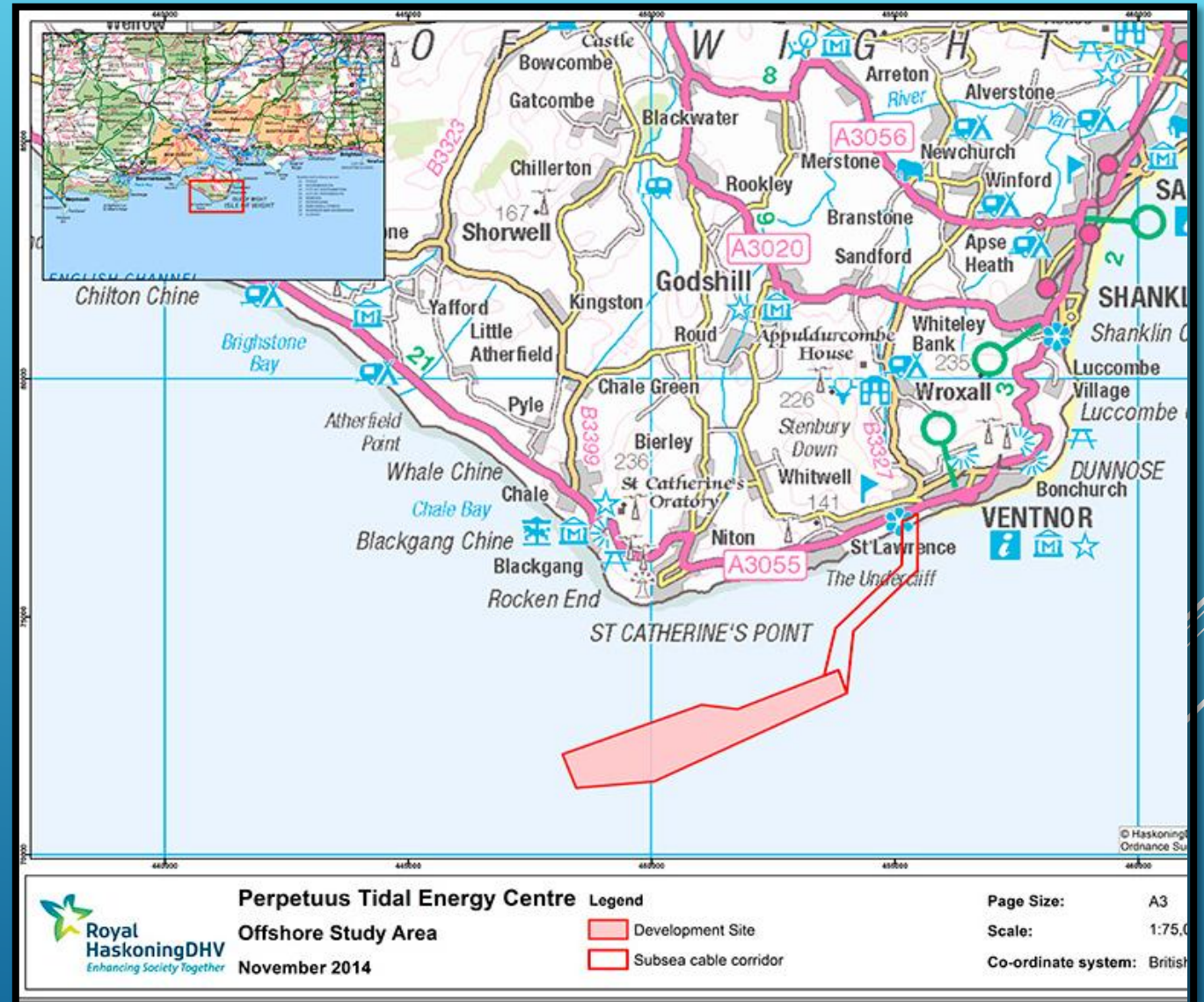


Perpetuus Tidal Energy Centre

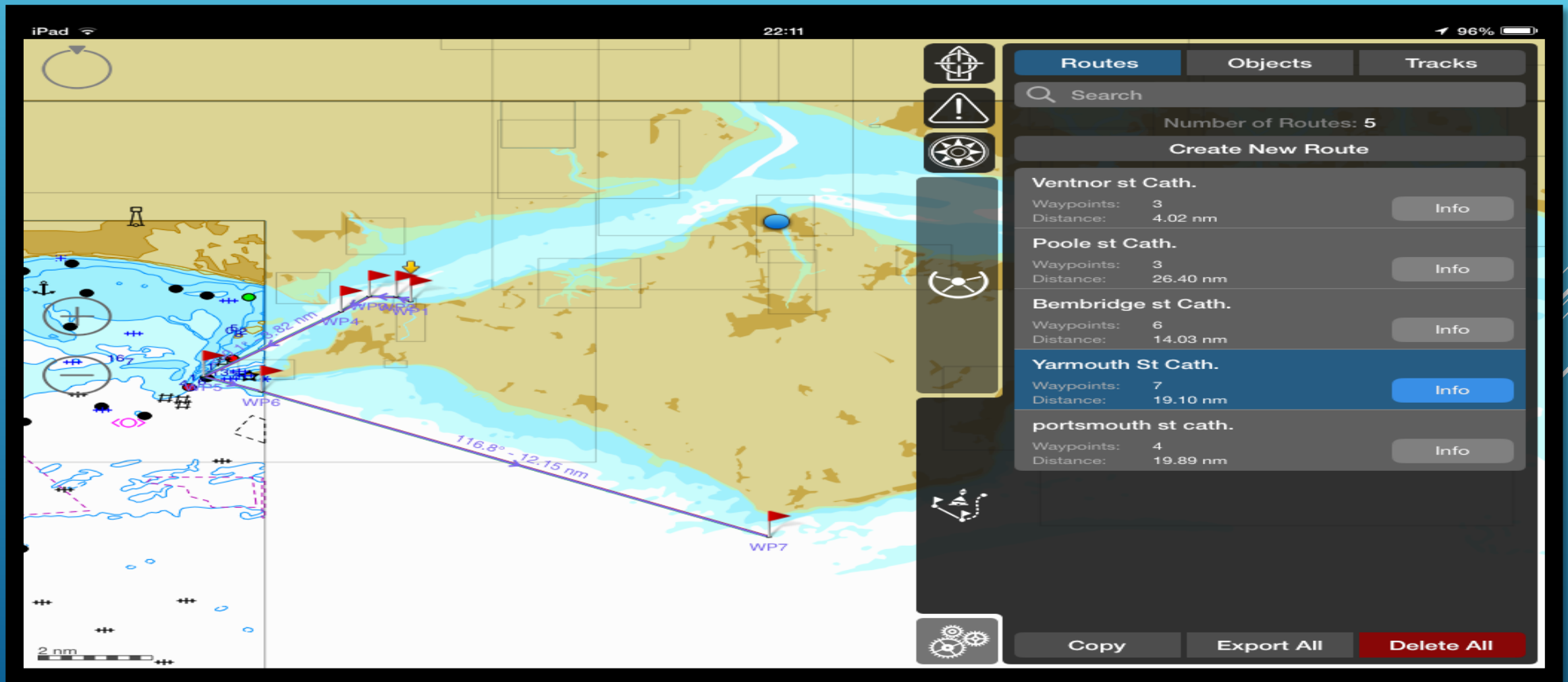
- ▶ Multi-technology tidal array demonstration facility
 - ▶ to facilitate the demonstration of tidal devices
 - ▶ to support technological development and
 - ▶ to provide the opportunity to collate operational data during deployment
- ▶ 5km² Development Site
- ▶ Development Consent (2015)
- ▶ Up to 60 Turbines, 30MW Power
- ▶ Construction 2016/2017
- ▶ Operational 2017/2018 (25 Year Lease)



PTEC Proposed Site



Yarmouth – PTEC 18-19 NM Closest 24 hr Deep Water Port



Potential Offering from Yarmouth Harbour, The Town & The Isle of Wight

- ▶ Marine
 - ▶ Support Vessel Berthing
 - ▶ Crew & Technicians Transfers
- ▶ Port Services
 - ▶ Berthing Masters
 - ▶ Re-fuelling / Water supplies
 - ▶ Vessel Traffic and Port Control
- ▶ Land
 - ▶ Office Rentals & Staff
 - ▶ Warehousing & Lifting Equipment
- ▶ Supply Chain
 - ▶ Vessel Charter
Survey, Crew/Equipment Transfer, Dive support, Subsea Equipment Launch/Recovery
 - ▶ Boat Yard Facilities
 - ▶ Engineers, Technicians, Crew
 - ▶ Hoteliers, Catering etc.

Join the EcoHub Network

- ▶ Tell us about
 - ▶ Your Company
 - ▶ Your Interest in Offshore Renewable Energy
 - ▶ Your Projects
 - ▶ Your Requirements and how Yarmouth Harbour could help you
- ▶ We will tell you about
 - ▶ Ongoing Projects at Yarmouth Harbour
 - ▶ Forthcoming Opportunities
- ▶ All you need to do is
 - ▶ In the First Instance – Contact me



John Gallimore
Business Development/Commercial Manager
Yarmouth Harbour
John.Gallimore@Yarmouth-harbour.co.uk